

SWIMMING PEN CREEK ELEMENTARY

School Improvement Plan
2015-2016



Swimming Pen Creek Elementary School

Welcome to Swimming Pen Creek Elementary



Innovate. Engage. Empower

SPC Mission Statement

Swimming Pen Creek Elementary is committed to working collaboratively with all stakeholders to provide students with an educational experience that is motivating, challenging, and rewarding.



Swimming Pen Creek Elementary School

SPC Vision Statement

Our vision is to empower students by providing an innovative and engaging learning environment that prepares them for future success.



Swimming Pen Creek Elementary School

SPC Goals

- 1) All staff members of SPC create a learning community.
- 2) Protect the learning environment and time on task in a positive manner.
- 3) Involve and respect all stakeholders.
- 4) Respect the profession of teaching and promote professional learning with all members.

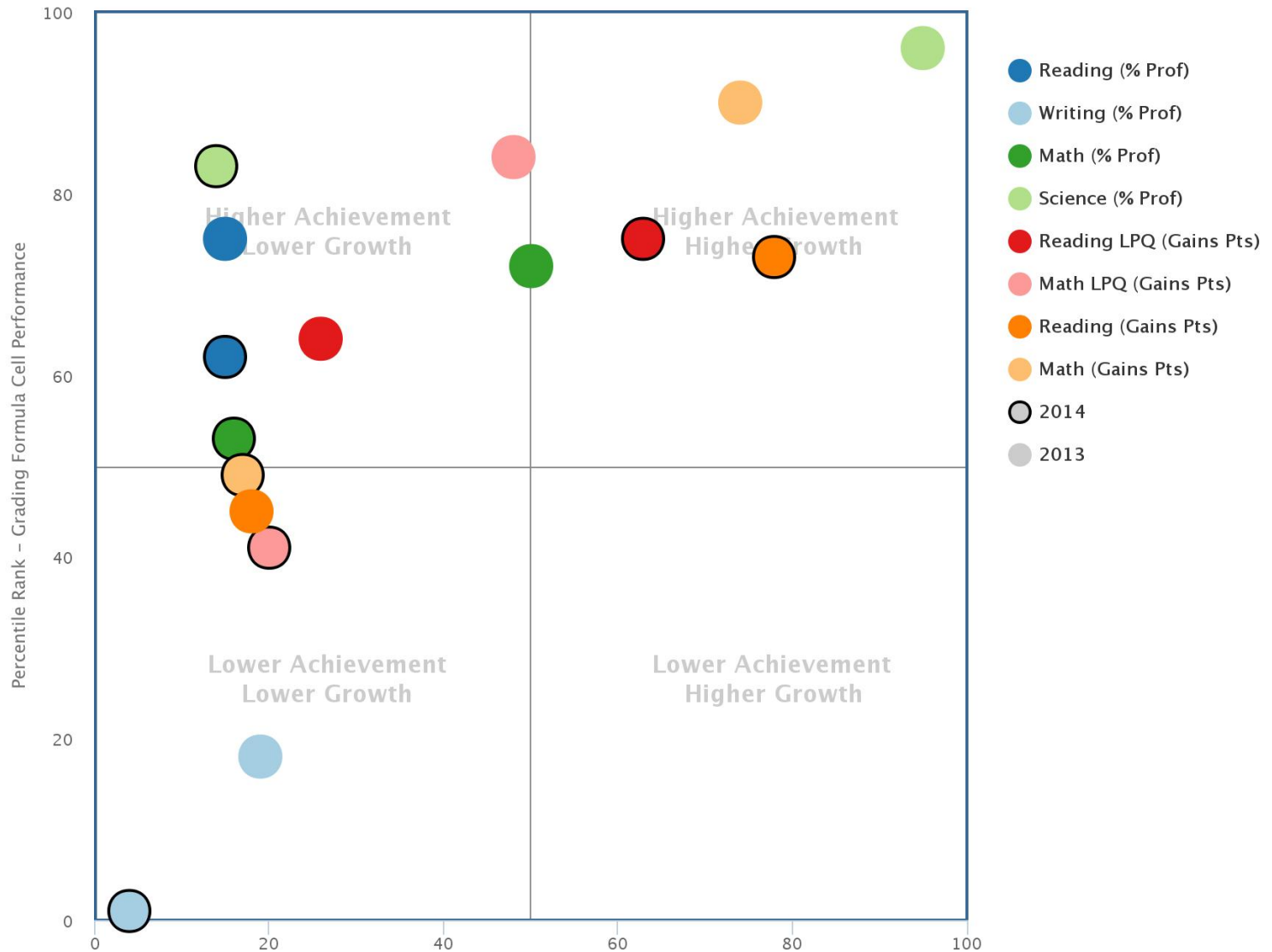


SPC Otters are Superheroes



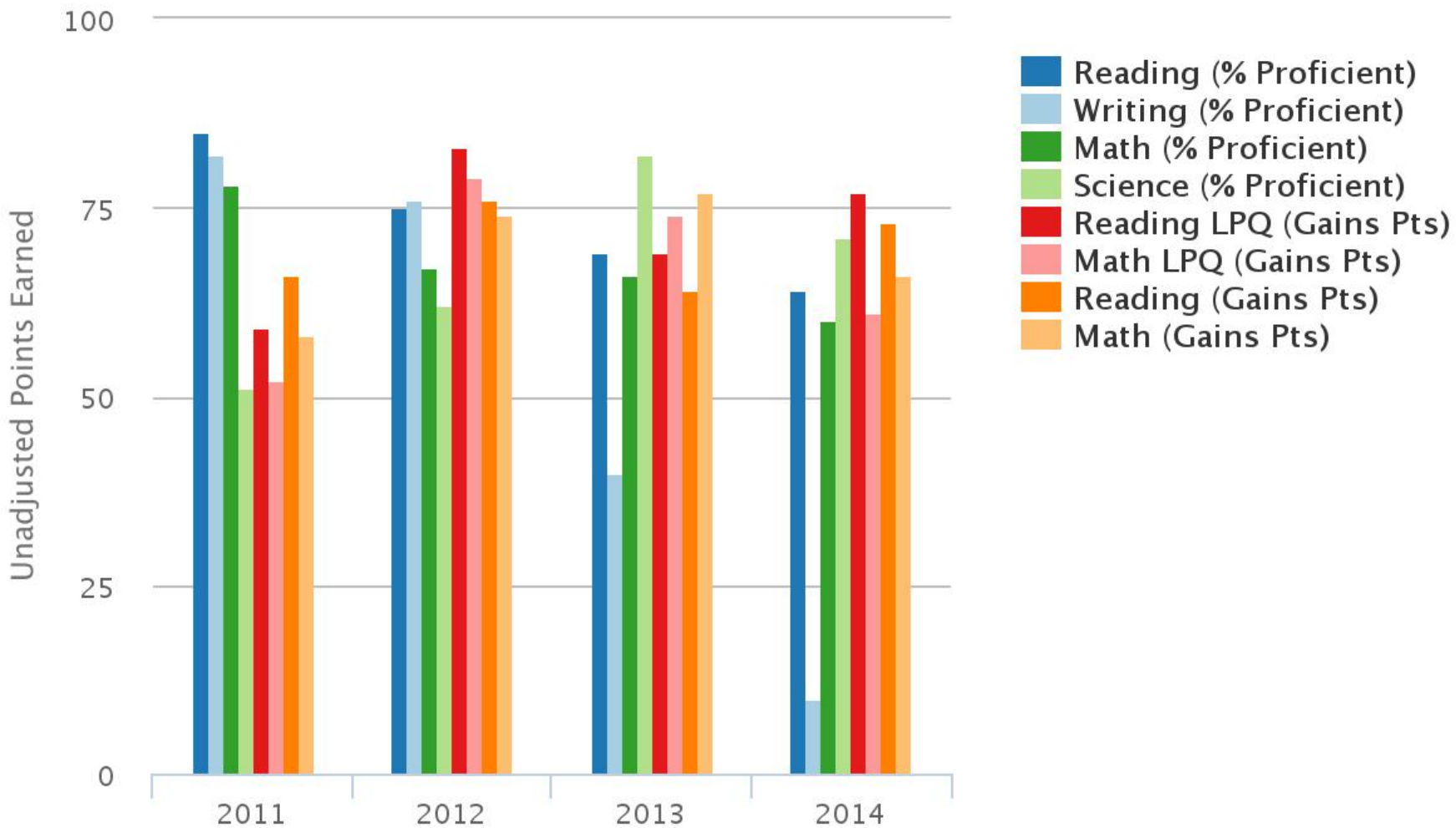
Innovate. Engage. Empower

Academic Outcomes Percentile Rankings (PR)
 Performance vs. Year-over-Year Growth by Grading Formula Cell
 Clay - 0571 - Swimming Pen Creek Elementary School

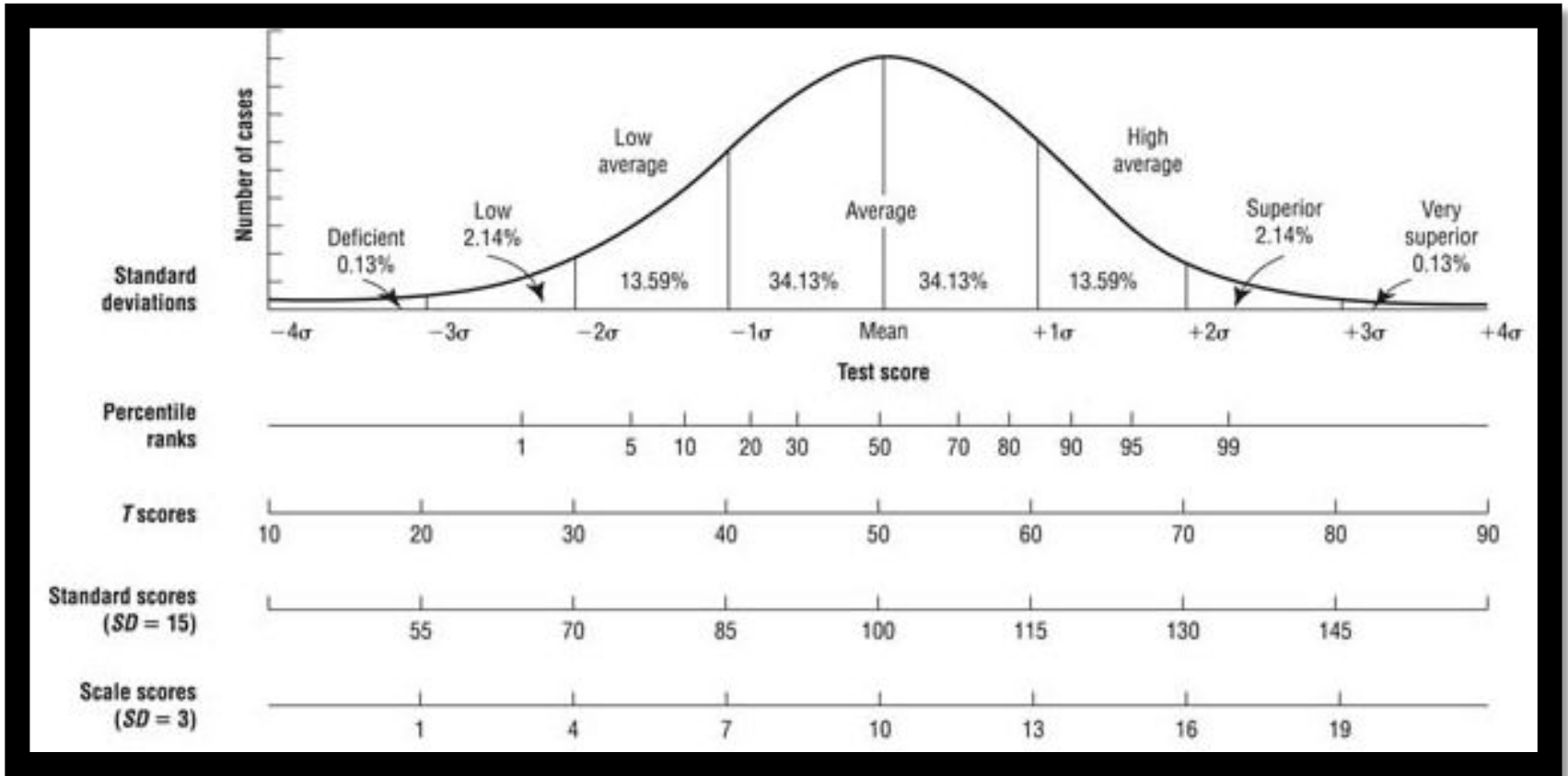


Total Unadjusted Earned Points by Grading Formula Cell

0571 - Swimming Pen Creek Elementary School



T Score Conversions



Swimming Pen Creek Elementary School

Math Quartile Data

	% in the Statewide Bottom Quartile (Bottom 25%)	% in the Statewide Second Quartile (26th to 50th Percentile)	% in the Statewide Third Quartile (51st to 75th Percentile)	% in the Statewide Top Quartile (Top 25%)
SPC	31%	35%	24%	20%
District	17%	26%	29%	28%



Swimming Pen Creek Elementary School

ELA Quartile Data

	% in the Statewide Bottom Quartile (Bottom 25%)	% in the Statewide Second Quartile (26th to 50th Percentile)	% in the Statewide Third Quartile (51st to 75th Percentile)	% in the Statewide Top Quartile (Top 25%)
SPC	20%	24%	32%	23%
District	19%	26%	29%	26%



Swimming Pen Creek Elementary School

2014-2015 3rd Grade FSA Math	
	Mean T Score
SPC	51
District Average	52
State Average	50

2014-2015 3rd Grade FSA Reading	
	Mean T Score
SPC	52
District Average	52
State Average	50



Swimming Pen Creek Elementary School

2014-2015 4th Grade FSA Math	
	Mean T Score
SPC	44
District Average	50
State Average	50

2014-2015 4th Grade FSA Reading	
	Mean T Score
SPC	48
District Average	51
State Average	50



Swimming Pen Creek Elementary School

2014-2015 5th Grade FSA Math	
	Mean T Score
SPC	51
District Average	51
State Average	51

2014-2015 5th Grade FSA Reading	
	Mean T Score
SPC	49
District Average	51
State Average	50



Swimming Pen Creek Elementary School

2015 5th Grade Science FCAT Results

			Percentage of Students by Achievement Level						Mean Points Earned By Reporting Category			
	Students Tested	Mean Scale Score	1	2	3	4	5	Percentage Passing (Level 3 and Above)	Cat. 1	Cat. 2	Cat. 3	Cat. 4
SPC	57	204	16	33	21	14	16	51	7	11	11	10
District	2,523	203	16	26	32	15	12	59	7	11	12	10
State	198,519	200	22	25	27	13	12	53	7	11	11	10



Swimming Pen Creek Elementary School

2014-2015 6th Grade FSA Math	
	Mean T Score
SPC	53
District Average	53
State Average	49

2014-2015 6th Grade FSA Reading	
	Mean T Score
SPC	54
District Average	52
State Average	50



Swimming Pen Creek Elementary School

SIP Goal 1

- **SIP Goal 1:** Increase writing proficiency across content areas
- **Indicator:** 70% proficiency rate on English Language Arts (ELA) Florida Standards Assessment (FSA)



Swimming Pen Creek Elementary School

Action Step

- **Strategy:** Teachers will collaborate to plan writing activities across content areas and create a bank of cross curricular journal prompts/activities
- **Action Plan:** Teachers will research, collect, and compile a pool of supplemental materials to support writing across content areas.



Evidence of Action Plan Implementation

- Modeling Shared Writing
- Interactive Math Journals
- Responding to nonfiction Texts in All Contents
- Use of Rubrics to Score Writing Responses
- Anchor Charts
- Data Driven Instruction and Interventions for Struggling Students in Small Groups



Evidence of Action Plan Implementation

- Math & Reading Toolkits
- Making Meaning supplemental Library Sets
- PLCs with Writing as Learning Target Plan
- PALS training
- Achieve 3000 PD/training
- Before & after school tutoring
- Book sets created by media specialist



Swimming Pen Creek Elementary School

Evidence of Teachers' Strategies

- Provide writing organizers
- Provide writing structures/formulas to students
- Provide rubrics/tools for students to check their own work
- Student collaboration
- Unified Grade Level Approach to Assessment of Writing Pieces
- PLC Collaboration of Cross Curricular Prompts
- Student/teacher conferencing



Swimming Pen Creek Elementary School

Evidence of Teachers' Strategies

- Acronyms to remember the types of writing
- Model FSA style
- Highlighting/color coding important elements
- Students edit others papers according to FSA rubric
- DBQ response essays
- Mini lessons on LA/grammar
- FSA Practice Prompts



SIP Goal 2

- **SIP Goal 2:** Increase staff knowledge of Florida Standards
- **Indicator:** 70% proficiency rate on English Language Arts (ELA) and **Mathematics** Florida Standards Assessment (FSA)



Swimming Pen Creek Elementary School

Action Step

- **Strategy:** Teachers will collaborate in weekly PLCs to document activities and plan lessons to address Florida Standards.
- **Action Plan:** PLC weekly logs will be reviewed by Administration to ensure teachers are using Florida Standards to guide lesson planning and that activities, methods, and assessments demonstrate each grade level's understanding of the Florida Standards.



PLC Groups 2015-16

- Kindergarten Teachers: “Standards”

Learning Target...To Become Proficient in Developmentally Appropriate Reading Practices for Kindergarten Students based on the Standards

- First and Second Grade Teachers: “Standards”

Learning Target... Increase Writing Proficiency Across all Contents Areas in the Curriculum

- Third and Fourth Grade Teachers: “Standards”

Learning TargetIncrease Writing Proficiency Across all Contents by using evidence from the text



PLC Groups 2015-16

- Fourth and Fifth Grade Teachers: Framework Friends
Learning TargetLearning the Intentional Framework to Improve Classroom Instruction
- Sixth Grade, Resource, Guidance: Behavior
Learning Target... Increase Student Behavior through Implementation of Positive Behavior Support Program in Sixth Grade



Swimming Pen Creek Elementary School

SIP Goal 3

- **SIP Goal 3:** Foster a positive learning environment to support the social and emotional needs of each student
- **Indicators:** No more than 10% of students with 2 or more behavior referrals and 85% positive attendance rate



Action Step

- **Strategy:** Collaborate with school-based staff members, such as the behavior site coach, guidance counselor, and school psychologist to develop strategies to meet the social and emotional needs of individual students.
- **Action Plan:** Teachers will meet monthly in curriculum council with school leaders to discuss general needs and quarterly to discuss students' academic, social, and emotional needs in depth.



Swimming Pen Creek Elementary School

SIP Goal 4

- **SIP Goal 4:** Increase students' problem solving skills in math.
- **Indicator:** 70% proficiency rate on Mathematics Florida Standards Assessment (FSA)



Swimming Pen Creek Elementary School

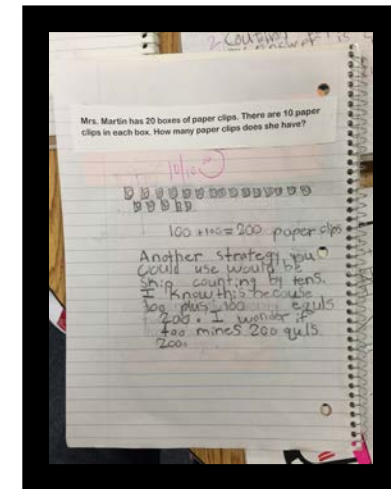
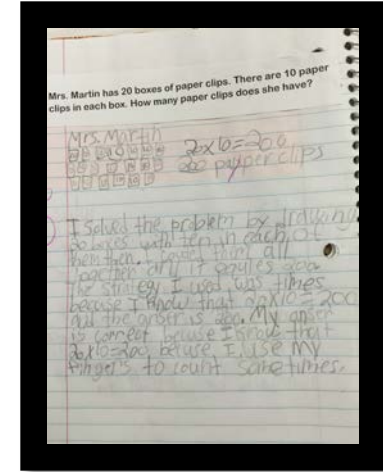
Action Step

- **Strategy:** Collaboration among teachers to design math lessons incorporating problem solving.
- **Action Plan:** Teachers will meet during common planning and PLCs to discuss and create multi-select and short response math problems and interactive journal prompts.



Evidence of Action Plan Implementation

- Math journals
- FSA prompts and test item specs
- FSA aligned Go Math assessments
- Short response and multi-select assessments
- PLCs
- Test item analyses
- Moby Max math
- ESE inclusion model
- Classroom assistant inclusion model
- ISS inclusion model (proactive behavior and academic concerns)
- Parent night for FSA information



Swimming Pen Creek Elementary School

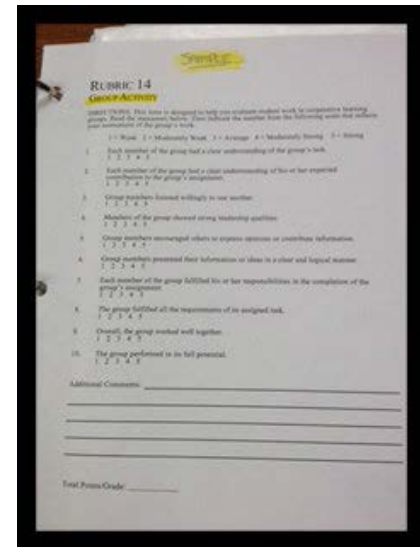
Assessments/Data at SPC

- FCAT
 - FSA
 - FSA K-2
 - PALS
 - One Clay Writes
 - Performance Matters
 - AR
 - STAR
 - Moby Max
 - San Diego
 - DAZE
- Dolch Word List
 - Fluency Cold Reads
 - Systematic Phonics
 - Tier 1 Assessments
 - Achieve 3000
 - Journals
 - IDR
 - Being A Writer
 - DIEBELS
 - (MTSS)
 - Test Item Analysis



Action Steps School Wide

- Quarterly Data Days per grade level with Collaboration with ESE, Guidance, and Administration
- Scheduled STAR Assessments for all students
- Foundations: All new students have a “New Student Tour”
- Foundations: School wide implementation of an “Amazing Otter Behavior Award”
- Raising Leaders.... Sixth Grade Ambassadors
- Common language for content/rubrics & standardized use of rubrics
- Making Meaning Teachers Visit Model Schools



Swimming Pen Creek Elementary School

Action Steps in Classrooms

- All Classroom Teachers Have Printed Curriculum and follow pacing Guide
- Essential questions and “I Can” statements posted in all rooms daily
- Standards posted for lessons
- Leveled libraries in all rooms with student knowledge of personal level of reading
- Reading levels posted in all rooms
- Student focused collaboration in lessons
- Students Know Goals



Swimming Pen Creek Elementary School

Best Teaching Practices Used School Wide

- Create a plan to provide consistent feedback to students
- Design student conference templates based on standards and mastery and incorporate it for accountability based on quarterly assessments
- Small group instruction in all classrooms for differentiation
- Consistent implementation/evidence of instructional framework
- Collaboration with colleagues that is focused on standards in Professional Learning Communities that consistently probe instruction and review student work for student achievement



Swimming Pen Creek Elementary School

What to Do at SPC...

- Chorus
 - Lego Robotics
 - Math Club
 - Chess Club
 - Code.org (computer programming)
 - News Team
 - Run Walk
 - Reading Buddies
 - Clay County BEST Teachers
 - Three Teachers in Graduate School For Administration
- Principal's Lunch
 - Safety Patrol
 - 4 H Club
 - P.A.C Parents
 - Book Clubs
 - SSSR Club
 - AR
 - Achieve 3000
 - Principal's Lunch



Swimming Pen Creek Elementary School